

ActivIdentity™ SecureLogin® Single Sign-On

One identity for access to enabled applications, systems and websites.

Benefits

Strict credential management

Enforce strict policy for creating, using and maintaining credentials.

Strong proof of identity

Require smart card, token or biometric authentication at network and application levels.

Protect access to data

Enforce assigned access rights and audit user authentication activity.

Faster and easier logins

Provide users with rapid access to applications without the hassle of account lockouts and expired passwords.

Enhance users' productivity

Reduce the time users spend managing credentials and logging into corporate systems.

Reduce help desk costs

Credentials resets account for up to 40% of help desk costs according to many leading analysts.

Streamline access to corporate systems

Protect your network and corporate information with ActivIdentity SecureLogin Single Sign-On. Reduce the impact identity proliferation by providing users with a single identity and seamlessly creating, issuing, managing and maintaining the linked credentials. By removing credential management from users and enforcing strict security policies, SecureLogin Single Sign-On enhances network security, improves employee productivity, assists with legislative compliance and drives down operational costs.

Key Features

> Solve credential management issues:

- Provide users with a single identity to authenticate for streamlined access to linked systems

> Strengthen network security

- Achieve strict authentication requirements at the application level
- Integrate with ActivIdentity strong authentication solutions
- Guard against phishing attacks
- Supervise credentials—the keys to sensitive information

> Centralize user account management

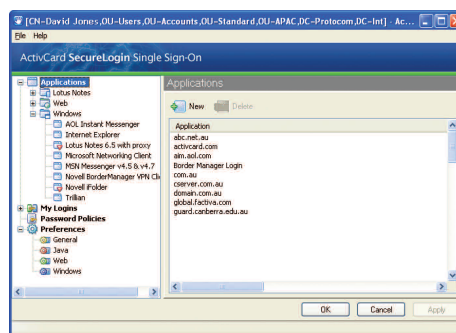
- Efficiently manage users' accounts from a central location in the directory
- Securely distribute policies across user groups using group policy support

> Meet legislative requirements

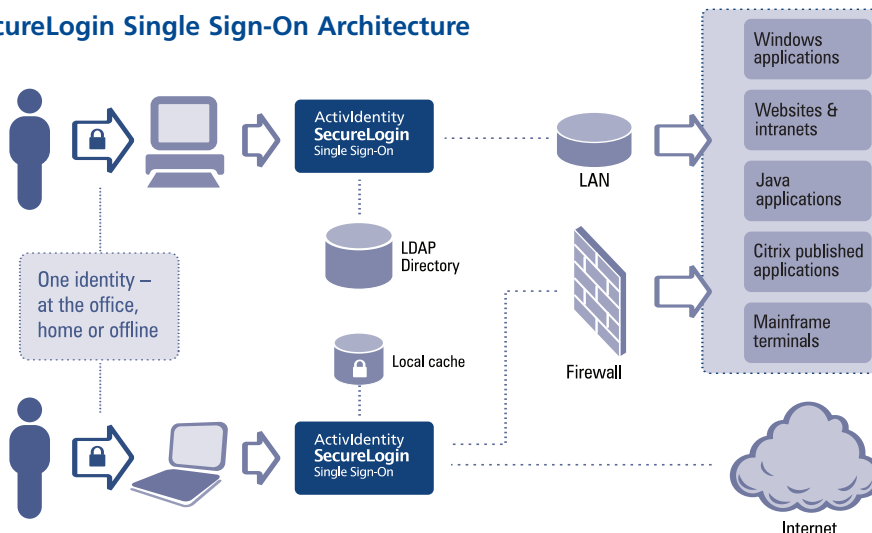
- Realize proof-of-identity, enforced access rights and auditability.

> Deploy seamlessly into existing identity management architectures

- Achieve comprehensive single sign-on access to applications, systems, emulators and websites
- Deploy into existing directory identity repositories—no additional infrastructure costs!
- Interoperate with user provisioning systems for streamlined identity management
- Integrate with out-of-the-box and in-house applications
- Configure with web access management software



SecureLogin Single Sign-On Architecture



How it works: When a user signs into the network, SecureLogin Single Sign-On launches and provides them seamless access to applications, websites and mainframe terminals

ActivIdentity SecureLogin Single Sign-On

Specifications

Directory Support

- › Microsoft Active Directory®
- › Microsoft Active Directory Application Mode (ADAM)
- › Novell® eDirectory™
- › LDAP compliant directories

Servers

- › Microsoft® Windows® Server 2003
- › Microsoft Windows 2000 Server SP 4
- › Microsoft Windows 2000 Terminal Server

Clients

- › Microsoft Windows XP
- › Microsoft Windows 2000 Workstation SP 4

Browsers

- › Internet Explorer 5.01 or later
- › Mozilla Firefox 1.01 or later Citrix® support
- › Citrix MetaFrame Presentation Server™
- › Citrix MetaFrame XP™
- › Citrix MetaFrame™ 1.8
- › Published applications and desktops

Management tools

- › Microsoft Management Console (MMC) Active Directory Users and Computers snap-in
- › SecureLogin Administrative Management Utility
- › SecureLogin Personal Management Utility

Single sign-on for Windows applications

Provides predefined sign-on to applications such as:

- › AOL® Instant Messenger™
- › BMC® Remedy® ARUser & Notifier
- › Cerulean® Trillian
- › Cisco® VPN
- › Citrix Program Neighborhood & Agent
- › Check Point® Firewall-1™
- › Cyberview®
- › Entrust® Client & Server
- › ExcelCare Application
- › Goldmine® v5.5
- › Hornbill® SupportWorks
- › Lotus Notes® v5, v6.5 and Lotus Organizer® v4, v5

- › MEDITECH
- › Microsoft ActiveSync®
- › Microsoft Outlook Express®
- › Microsoft SQL Server
- › MSN® Messenger v4.5, v4.7, v5 & v6
- › Novell BorderManager® VPN Client
- › Novell Groupwise® Client & Notify
- › Novell iFolder®
- › Optima
- › Symantec PCAnywhere™ 8.0
- › SAP® 6.2
- › Targetfour HEAT Call Logging
- › Yahoo!® Messenger
- › and many more

Powerful web support

- › Standard and framed web pages
- › Complex forms and login pages
- › Pages containing radio buttons and checkboxes
- › Java AWT and SWING GUI applets and applications
- › Web proxy servers

Extensive terminal emulator support

Full support for more than 150 mainframe, UNIX®, ANSI® and custom terminal emulators including:

- › Popular 3270 and 5250 emulators from Eicon®, WRQ®, Wall Data®, IBM®, NetManage®, Jolly Giant, Pericom® and many more
- › Telnet emulators from WRQ, IBM, Microsoft, Novell and Tera Term
- › Many healthcare emulators, including HBO, Meditech, Lawson® and 3M®
- › Most ANSI and text-based emulators

Security

- › Protects credentials with triple DES encryption
- › Passphrase protection for mobile users
- › Supports SNMP error and event monitoring
- › Application layer of administration security in addition to directory-based ACL data security
- › Built-in security prevents unauthorized access to user credentials
- › Automated password randomization
- › Supports login, password change, expiration and almost all application error conditions

Deployment

- › Distribution via Novell ZENworks®, IBM Tivoli, Microsoft SMS and CA® Unicenter®
- › Attribute provisioning tool provides bulk import of user credentials from third party applications
- › Import and export functions allow settings and data to move across different directories
- › Digitally signed and encrypted XML files available for configuration distribution
- › Supports Microsoft Group Policy Object for control over credential and application definition

Visit

www.actividentity.com to find out more about SecureLogin Single Sign-On or register for a live product demonstration.

www.actividentity.com

ActivIdentity Americas

Tel: +1 (510) 574.0100
Fax: +1 (510) 574.0101
info@actividentity.com

ActivIdentity U.S. Federal

Tel: +1 (571) 522.1000
Fax: +1 (703) 988.9636
info@actividentity.com

ActivIdentity Europe

Tel: +33 (0) 1.42.04.84.00
Fax: +33 (0) 1.42.04.84.84
info@actividentity.com

ActivIdentity Asia Pacific

Tel: +61 (0) 2.6208.4888
Fax: +61 (0) 2.6281.7460
info@actividentity.com

ActivIdentity™